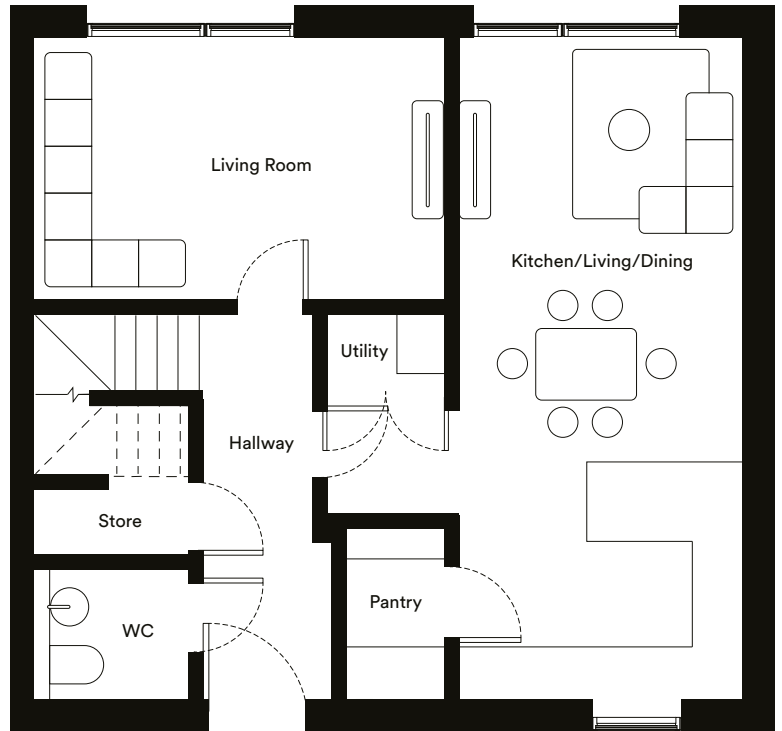


VIOLET

Floor plan



Total	122m²
Kitchen/Living/Dining	7.54m x 3.25m
Living Room	4.64m x 3.02m
Utility	1.45m x 0.88m
Pantry	2.00m x 1.20m
Bedroom 1	3.64m x 4.35m
Bedroom 2	3.25m x 3.77m
Bedroom 3	2.47m x 3.10m
Bedroom 4	3.70m x 2.42m

Total	1315 sq ft
Kitchen/Living/Dining	24ft 8" x 10ft 8"
Living Room	15ft 2" x 11ft 9"
Utility	4ft 9" x 2ft 10"
Pantry	6ft 6" x 3ft 11"
Bedroom 1	11ft 9" x 14ft 3"
Bedroom 2	10ft 8" x 12ft 4"
Bedroom 3	8ft 1" x 10ft 2"
Bedroom 4	12ft 1" x 7ft 11"

